

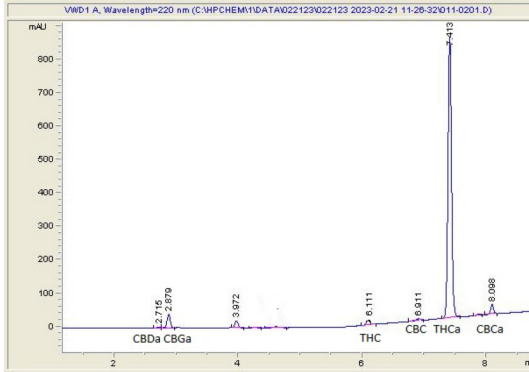
Sample 681-092920-714

White Cherry Zlurpee THCa Hemp Flower  
 Sample Submitted: 09-29-2024; Report Date: 09-29-2024

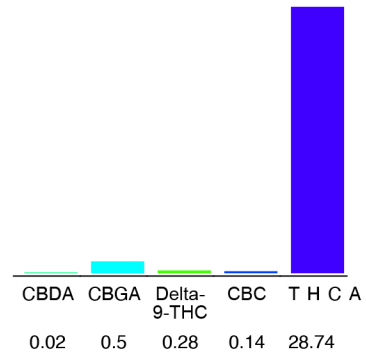
## White Cherry Zlurpee THCa Hemp Flower

Plant Material: Flower

### Chromatogram



### Cannabinoid Profile



### Cannabinoid Profile by HPLC

**0.28%**  
Delta-9-THC

**0.08%**  
CBD

**28.74%**  
Total Cannabinoids

Cannabinoid	% wt	mg/g
CBDA	0.06	0.6
CBGA	0.4	4.2
Delta-9-THC	0.29	2.9
CBC	0.18	1.8
THCA	28.74	287.4
<b>Total Cannabinoids</b>	<b>287.44</b>	<b>287.44</b>
<b>Calculated Delta-9-THC Yield</b>	<b>27.68</b>	<b>276.81</b>
<b>Calculated CBD Yield</b>	<b>0.08</b>	<b>0.82</b>

Calculated Maximum Delta-9-THC Yield = Delta-9-THC + 0.877 \* THCA  
 Calculated Maximum CBD Yield = CBD + 0.877 \* CBDA

**Marin Analytics, LLC**  
 250 Bel Marin Keys Blvd, Suite D4  
 Novato, CA 94949

415-936-6477 / sarabiancalana1@gmail.com

**Sara Biancalana**  
 Chief Scientist