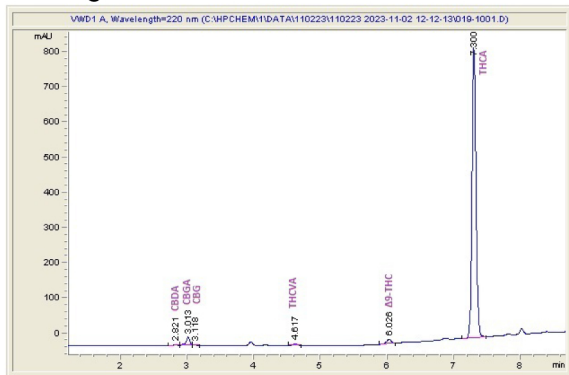
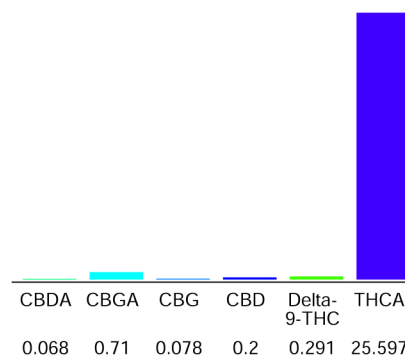


**Sample 656-110223**
**RS11**

Sample Submitted: 11-02-2023; Report Date: 11-07-2023

**RS11**

Plant Material: Hemp Flower

**Chromatogram**

**Cannabinoid Profile**

**Cannabinoid Profile by HPLC**
**0.29%**

Delta-9-THC

**0.20%**

CBD

**26.94%**

Total Cannabinoids

| Cannabinoid                 | % wt         | mg/g          |
|-----------------------------|--------------|---------------|
| CBDA                        | 0.068        | 0.68          |
| CBGA                        | 0.71         | 7.1           |
| CBG                         | 0.078        | 0.78          |
| CBD                         | 0.2          | 2.0           |
| Delta-9-THC                 | 0.291        | 2.91          |
| THCA                        | 25.6         | 255.97        |
| <b>Total Cannabinoids</b>   | <b>26.94</b> | <b>269.4</b>  |
| <b>Calculated Total THC</b> | <b>22.74</b> | <b>227.40</b> |
| <b>Calculated CBD Yield</b> | <b>0.26</b>  | <b>2.60</b>   |

Calculated Total THC = Delta-9-THC + 0.877 \* THCA  
 Calculated Maximum CBD Yield = CBD + 0.877 \* CBDA

**Marin Analytics, LLC**  
 250 Bel Marin Keys Blvd, Suite D4  
 Novato, CA 94949

833-321-TEST / info@marinanalytics.com


**Mike Clemmons**  
 Lab Manager