



Sample 681-20250225174

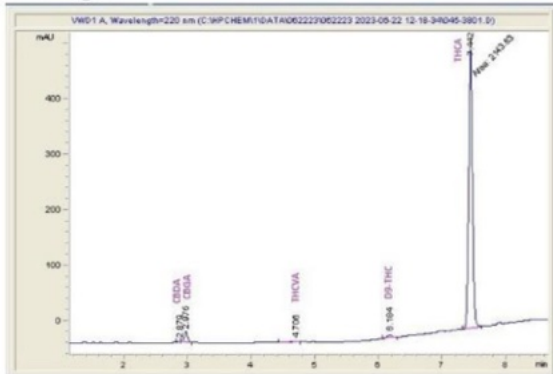
Pink Runtz

Sample Submitted: 02-20-2025; Report Date: 02-25-2025

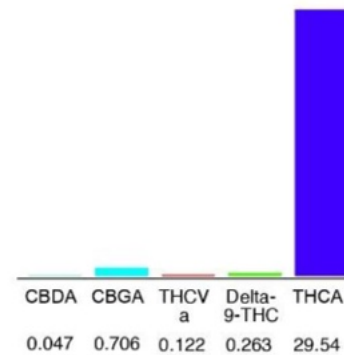
Pink Runtz (THCA Hemp Flower)

Plant Material: Flower

Chromatogram



Cannabinoid Profile



Cannabinoid Profile by HPLC

0.26%
Delta-9-THC

0.00%
CBD

30.68%
Total Cannabinoids

Cannabinoid	% wt	mg/g
CBDA	0.047	0.47
CBGA	0.706	7.06
THCVa	0.122	1.22
Delta-9-THC	0.263	2.63
THCA	29.54	295.4
Total Cannabinoids	30.678	306.78

Calculated Total THC = Delta-9-THC + 0.877 * THCA
 Calculated Maximum CBD Yield = CBD + 0.877 * CBDA

Marin Analytics, LLC
 250 Bel Marin Keys Blvd, Suite D4
 Novato, CA 94949
 833-321-TEST / info@marinanalytics.com

Sara Biancalana
Sara Biancalana
 Chief Scientist

This sample has been tested by Marin Analytics, LLC using valid testing methodologies and a quality system. Values reported relate only to the sample tested. Marin Analytics, LLC makes no claims as to the efficacy, safety, or other risks associated with any detected or non-detected levels of any compounds reported herein. This Certificate shall not be reproduced except in full without the written approval of Marin Analytics, LLC. Copyright 2023 Marin Analytics, LLC All Rights Reserved.