

Sample

Mint Pie THCa Hemp Flower

Batch/Lot # Room 5-J 895

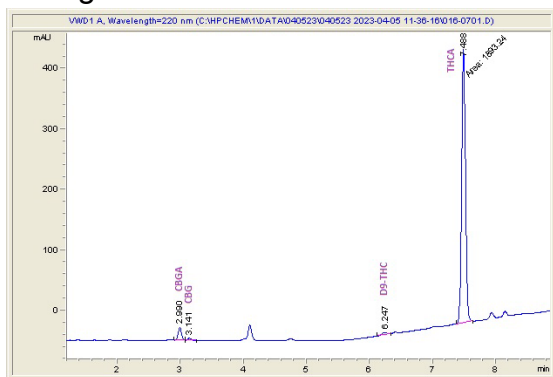
Sample Submitted: 08-26-2024; Report Date: 08-26-2024

## Mint Pie THCa Hemp Flower

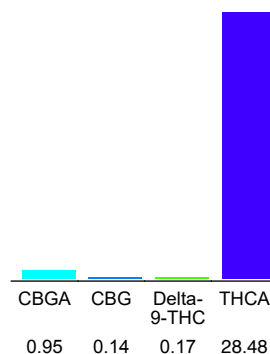
Plant Material: Flower

Batch/Lot # Room 5-J 895

## Chromatogram



## Cannabinoid Profile



## Cannabinoid Profile by HPLC

0.17%

Delta-9-THC

0.00%

CBD

29.74%

Total Cannabinoids

Cannabinoid	% wt	mg/g
CBGA	0.95	9.5
CBG	0.14	1.4
Delta-9-THC	0.17	1.7
THCA	28.48	284.8
<b>Total Cannabinoids</b>	<b>29.74</b>	<b>297.4</b>
<b>Calculated CBD Yield</b>	<b>0.00</b>	<b>0.00</b>

Calculated Maximum CBD Yield = CBD + 0.877 \* CBDA

## Marin Analytics, LLC

250 Bel Marin Keys Blvd, Suite D4  
Novato, CA 94949

415-936-6477 / sarabiancalana1@gmail.com

Sara Biancalana  
Chief Scientist

This sample has been tested by Marin Analytics, LLC using valid testing methodologies and a quality system. Values reported relate only to the sample tested. Marin Analytics, LLC makes no claims as to the efficacy, safety or other risks associated with any detected or non-detected levels of any compounds reported herein. This Certificate shall not be reproduced except in full, without the written approval of Marin Analytics, LLC. Copyright 2022 Marin Analytics, LLC All Rights Reserved.