



Happy Shaman

Sample XXXXXXXXXX

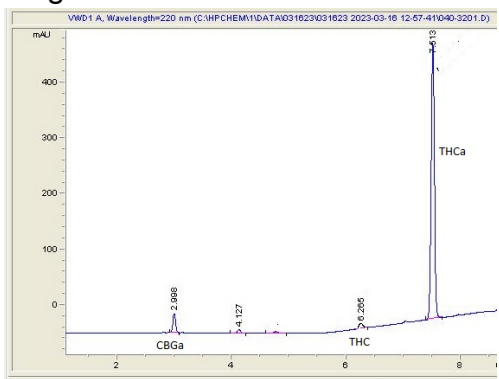
Kush Cake THC-A Hemp

Sample Submitted: 03-17-2024; Report Date: 03-17-2024

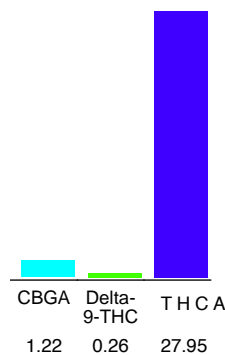
Kush Cake THC-A Hemp

Plant Material: Flower

Chromatogram



Cannabinoid Profile



Cannabinoid Profile by HPLC

0.26%
 Delta-9-THC

0.00%
 CBD

29.43%
 Total Cannabinoids

Cannabinoid	% wt	mg/g
CBGA	1.22	12.2
Delta-9-THC	0.26	2.6
THCA	27.95	279.5
Total Cannabinoids	29.43	294.3
Calculated CBD Yield	0.00	0.00

Calculated Maximum CBD Yield = CBD + 0.877 * CBDA

Marin Analytics, LLC
 250 Bel Marin Keys Blvd, Suite D4
 Novato, CA 94949
 415-936-6477 / sarabiancalana1@gmail.com


Sara Biancalana
 Chief Scientist

This sample has been tested by Marin Analytics, LLC using valid testing methodologies and a quality system. Values reported relate only to the sample tested. Marin Analytics, LLC makes no claims as to the efficacy, safety or other risks associated with any detected or non-detected levels of any compounds reported herein. This Certificate shall not be reproduced except in full, without the written approval of Marin Analytics, LLC. Copyright 2022 Marin Analytics, LLC All Rights Reserved.