

### Sample

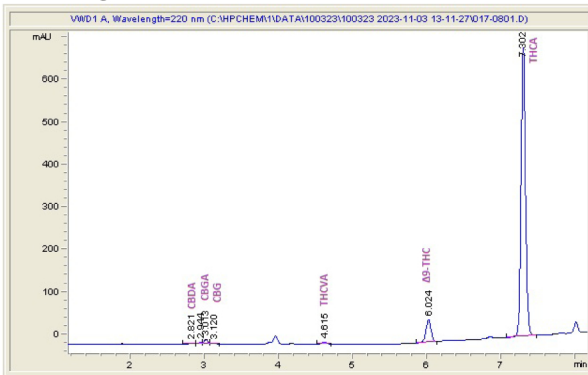
Jet Fuel

Sample Submitted: 11-03-2023; Report Date: 11-06-2023

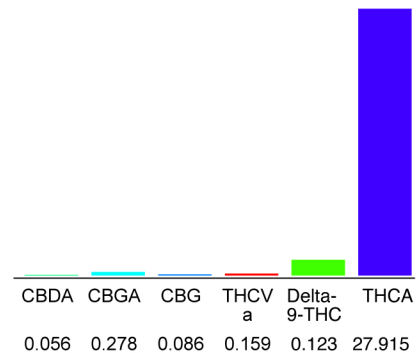
### Jet Fuel

Plant Material: Hemp Flower

### Chromatogram



### Cannabinoid Profile



### Cannabinoid Profile by HPLC

0.12%

Delta-9-THC

0.00%

CBD

28.62%

Total Cannabinoids

Cannabinoid	% wt	mg/g
CBDA	0.056	0.56
CBGA	0.278	2.78
CBG	0.086	0.86
THCVa	0.159	1.59
Delta-9-THC	0.123	1.23
THCA	27.92	279.15
<b>Total Cannabinoids</b>	<b>28.62</b>	<b>286.22</b>
<b>Calculated Total THC</b>	<b>27.57</b>	<b>275.73</b>
<b>Calculated CBD Yield</b>	<b>0.05</b>	<b>0.49</b>

Calculated Total THC = Delta-9-THC + 0.877 \* THCA

Calculated Maximum CBD Yield = CBD + 0.877 \* CBDA

**Marin Analytics, LLC**

250 Bel Marin Keys Blvd, Suite D4  
Novato, CA 94949

833-321-TEST / info@marinanalytics.com

**Mike Clemmons**  
Lab Manager