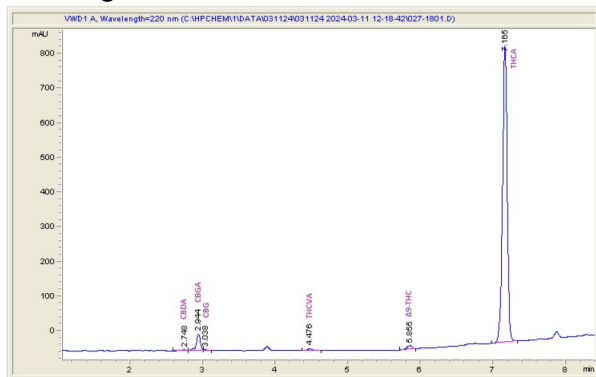

**Gushmintz**

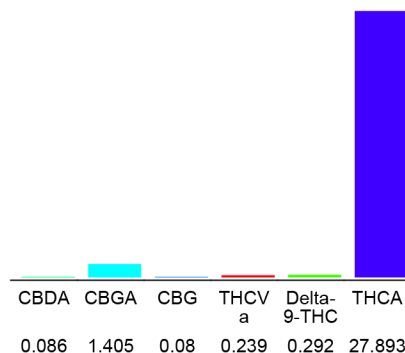
Sample Submitted: 03-11-2024; Report Date: 03-12-2024

# Gushmintz

## Chromatogram



## Cannabinoid Profile



## Cannabinoid Profile by HPLC

**0.29%**  
Delta-9-THC

**0.00%**  
CBD

**30.00%**  
Total Cannabinoids

| Cannabinoid                 | % wt         | mg/g          |
|-----------------------------|--------------|---------------|
| CBDA                        | 0.086        | 0.86          |
| CBGA                        | 1.405        | 14.05         |
| CBG                         | 0.08         | 0.8           |
| THCVa                       | 0.239        | 2.39          |
| Delta-9-THC                 | 0.292        | 2.92          |
| THCA                        | 27.89        | 278.93        |
| <b>Total Cannabinoids</b>   | <b>30.00</b> | <b>300.0</b>  |
| <b>Calculated Total THC</b> | <b>24.75</b> | <b>247.54</b> |
| <b>Calculated CBD Yield</b> | <b>0.08</b>  | <b>0.75</b>   |

Calculated Total THC = Delta-9-THC + 0.877 \* THCA  
 Calculated Maximum CBD Yield = CBD + 0.877 \* CBDA

**Marin Analytics, LLC**  
 250 Bel Marin Keys Blvd, Suite D4  
 Novato, CA 94949

833-321-TEST / info@marinanalytics.com



**Mike Clemmons**  
 Lab Manager