

Sample 681-112124-483

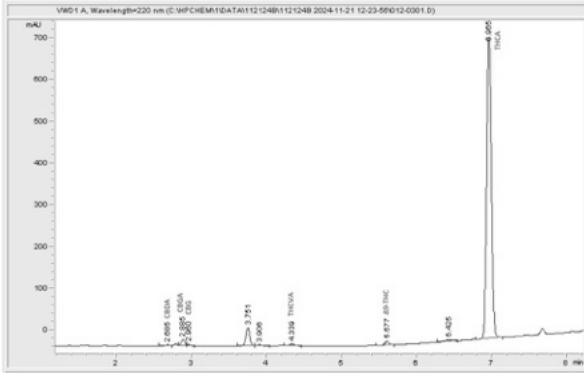
Cherry Pie

Sample Submitted: 11-21-2024; Report Date: 11-27-2024

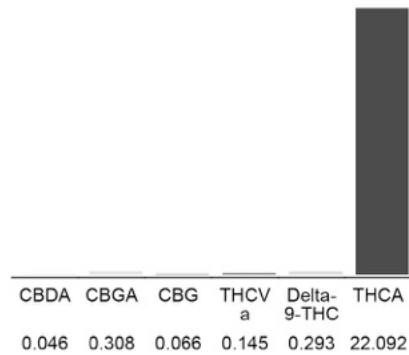
Cherry Pie

Plant Material: Hemp Flower

Chromatogram



Cannabinoid Profile



Cannabinoid Profile by HPLC

0.29%

Delta-9-THC

0.00%

CBD

22.95%

Total Cannabinoids

| Cannabinoid | % wt | mg/g |
|-----------------------------|--------------|---------------|
| CBDA | 0.046 | 0.46 |
| CBGA | 0.308 | 3.08 |
| CBG | 0.066 | 0.66 |
| THCVa | 0.145 | 1.45 |
| Delta-9-THC | 0.293 | 2.93 |
| THCA | 22.09 | 220.92 |
| Total Cannabinoids | 22.95 | 229.5 |
| Calculated Total THC | 19.67 | 196.68 |
| Calculated CBD Yield | 0.04 | 0.40 |

Calculated Total THC = Delta-9-THC + 0.877 * THCA
 Calculated Maximum CBD Yield = CBD + 0.877 * CBDA

Marin Analytics, LLC
 250 Bel Marin Keys Blvd, Suite D4
 Novato, CA 94949

833-321-TEST / info@marinanalytics.com



Mike Clemmons
 Lab Manager