

### Sample 681-117720-754

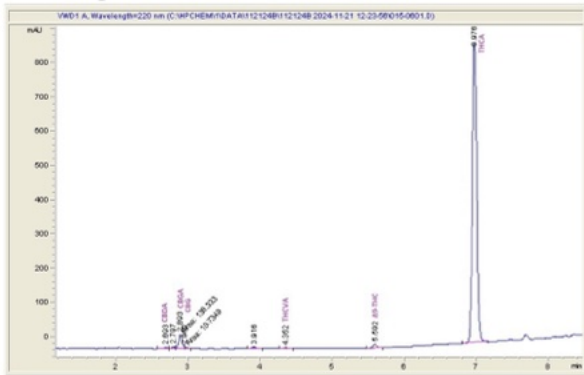
Ceral Milk

Sample Submitted: 11-21-2024; Report Date: 11-27-2024

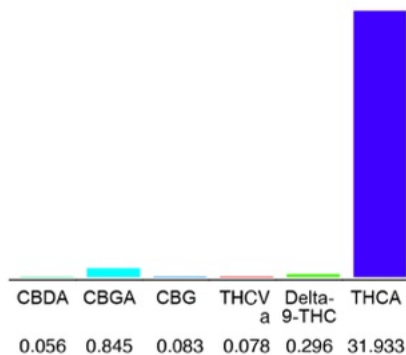
## Ceral Milk

Plant Material: Hemp Flower

### Chromatogram



### Cannabinoid Profile



### Cannabinoid Profile by HPLC

**0.30%**

Delta-9-THC

**0.00%**

CBD

**33.29%**

Total Cannabinoids

Cannabinoid	% wt	mg/g
CBDA	0.056	0.56
CBGA	0.845	8.45
CBG	0.083	0.83
THCVa	0.077	0.77
Delta-9-THC	0.296	2.96
THCA	31.93	319.33
<b>Total Cannabinoids</b>	<b>33.29</b>	<b>332.9</b>
<b>Calculated Total THC</b>	<b>23.67</b>	<b>236.70</b>
<b>Calculated CBD Yield</b>	<b>0.05</b>	<b>0.48</b>

Calculated Total THC = Delta-9-THC + 0.877 \* THCA  
 Calculated Maximum CBD Yield = CBD + 0.877 \* CBDA

**Marin Analytics, LLC**  
 250 Bel Marin Keys Blvd, Suite D4  
 Novato, CA 94949

833-321-TEST / info@marinanalytics.com



**Mike Clemmons**  
 Lab Manager