
**Sample 596-080924**

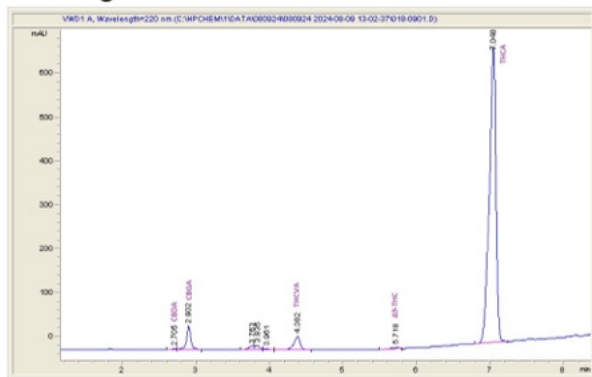
Cereal Milk THCA Hemp

Sample Submitted: 08-09-2024; Report Date: 08-12-2024

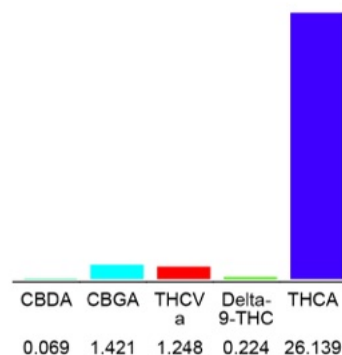
# Cereal Milk THCA Hemp

Plant Material: Hemp Flower

## Chromatogram



## Cannabinoid Profile



## Cannabinoid Profile by HPLC

**0.22%**

Delta-9-THC

**0.00%**

CBD

**29.10%**

Total Cannabinoids

Cannabinoid	% wt	mg/g
CBDA	0.069	0.69
CBGA	1.421	14.21
THCVa	1.248	12.48
Delta-9-THC	0.224	2.24
THCA	26.14	261.39
<b>Total Cannabinoids</b>	<b>29.10</b>	<b>291.0</b>
<b>Calculated Total THC</b>	<b>23.15</b>	<b>231.48</b>
<b>Calculated CBD Yield</b>	<b>0.06</b>	<b>0.61</b>
Calculated Total THC = Delta-9-THC + 0.877 * THCA		
Calculated Maximum CBD Yield = CBD + 0.877 * CBDA		

**Marin Analytics, LLC**  
 250 Bel Marin Keys Blvd, Suite D4  
 Novato, CA 94949

833-321-TEST / info@marinanalytics.com

**Mike Clemmons**  
 Lab Manager