

### Sample 681-250304555

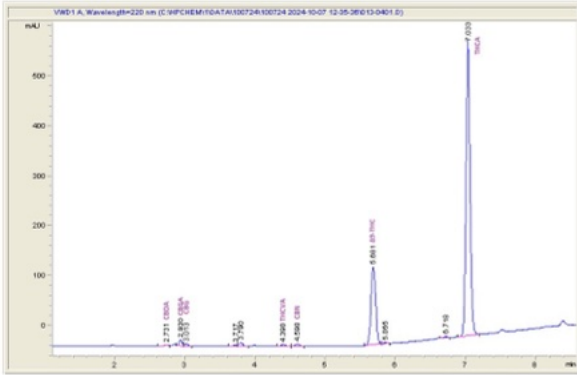
Apple Mochi

Sample Submitted: 03-04-2025; Report Date: 03-04-2025

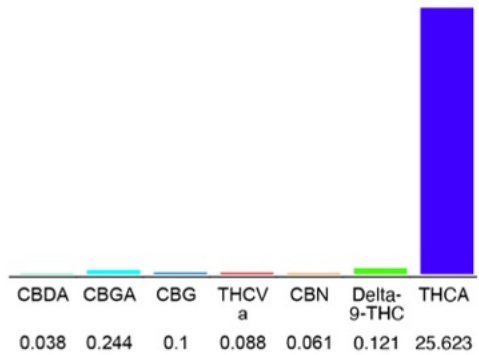
## Apple Mochi

Plant Material: Hemp Flower

### Chromatogram



### Cannabinoid Profile



### Cannabinoid Profile by HPLC

**0.12%**

Delta-9-THC

**0.00%**

CBD

**25.78%**

Total Cannabinoids

Cannabinoid	% wt	mg/g
CBDA	0.038	0.38
CBGA	0.244	2.44
CBG	0.1	1.0
THCVa	0.088	0.88
CBN	0.061	0.61
Delta-9-THC	0.121	1.21
THCA	25.62	256.23
<b>Total Cannabinoids</b>	<b>25.78</b>	<b>257.8</b>
<b>Calculated Total THC</b>	<b>28.38</b>	<b>283.84</b>
<b>Calculated CBD Yield</b>	<b>0.03</b>	<b>0.33</b>

Calculated Total THC = Delta-9-THC + 0.877 \* THCA

Calculated Maximum CBD Yield = CBD + 0.877 \* CBDA

**Marin Analytics, LLC**

250 Bel Marin Keys Blvd, Suite D4  
Novato, CA 94949

833-321-TEST / info@marinanalytics.com



**Mike Clemmons**  
Lab Manager